



BUHLMANN

TUBE SOLUTIONS

STAINLESS STEEL
DIN / EN / ASTM



we know how

Power | Process | Offshore | Oil & Gas | Projects

Stainless Steel

Ferritic / Martensitic Stainless Steel

Austenitic Stainless Steel

Duplex – Super Duplex

Heat Resistant Steel

With an extensive degree of reliability, BUHLMANN supplies materials for specific demands in accordance with, amongst others, PAS 1057. From strategic locations worldwide, we boast no fewer than nine warehousing facilities with a combined area of 135,000 square metres. The equivalent of almost 20 soccer fields. In each dedicated warehouse, we stock pipes, flanges, molded parts and accessories that are compliant to DIN, EN and ASME standards.

This guarantees our customers permanent material availability. In addition, BUHLMANN supplies special components compliant with customer specifications. Also, for demands specific to the chemical and petrochemical industry, we guarantee optimal supply security. This means, that even demands at short notice can be efficiently and effectively serviced.

Long-term supply agreements with companies guarantee a permanent stock of stainless steels 1.4404, 1.4541, 1.4571 and 1.4462 duplex as well as 321H and 347H.

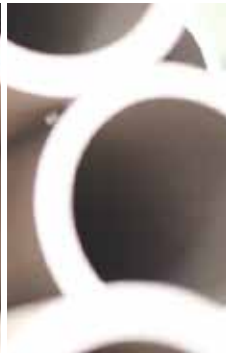
With a five-axis machining centre, BUHLMANN is able to machine pipe ends and numerous kinds of pipe accessories such as flanges, elbows, T-pieces and reducers. In addition, we are able to offer weld edge preparation, and boring and sawing up to an outside diameter of 810 millimetres. Block- or contour-milled T-pieces, reducers (concentric or eccentric), caps or socket weld fittings compliant with ASME complete our programme.

We stand for premium service.



STAINLESS Steel

TUBE		
Standard	Abbr. / Material	Material No.
EN 10216-5	X5CrNi18-10	1.4301
EN 10216-5	X2CrNi19-10	1.4306
EN 10216-5	X5CrNiMo17-12-2	1.4401
EN 10216-5	X2CrNiMo17-12-2	1.4404
EN 10216-5	X2CrNiMoN22-5-3	1.4462
EN 10216-5	X1NiCrMoCu25-20-5	1.4539
EN 10216-5	X6CrNiTi18-10	1.4541
EN 10216-5	X6CrNiMoTi17-12-2	1.4571
EN 10216-5	X6CrNiNb18-10	1.4550
EN 10217-7	X5CrNi18-10	1.4301
EN 10217-7	X2CrNi18-9	1.4307
EN 10217-7	X5CrNiMo17-12-2	1.4401
EN 10217-7	X2CrNiMo17-12-2	1.4404
EN 10217-7	X2CrNiMoN22-5-3	1.4462
EN 10217-7	X1NiCrMoCu25-20-5	1.4539
EN 10217-7	X6CrNiTi18-10	1.4541
EN 10217-7	X6CrNiMoTi17-12-2	1.4571
A312	TP 304 / TP 304 L	
A312	TP 304 / TP 304 H	
A312	TP 316 / TP 316 L	
A312	TP 321 / TP 321 H	
A312	TP 316Ti	
A790	UNS S31803 / S32205	
A312	TP 347 / TP 347 H	
A312	UNS N08904	
Superduplex	UNS S32750	1.4410
Superduplex	UNS S32760	1.4501



FITTING		
Standard	Abbr. / Material	Material No.
EN 10253-4	X5CrNi18-10	1.4301
EN 10253-4	X2CrNi19-10	1.4306
EN 10253-4	X5CrNiMo17-12-2	1.4401
EN 10253-4	X2CrNiMo17-12-2	1.4404
EN 10253-4	X2CrNiMoN22-5-3	1.4462
EN 10253-4	X1NiCrMoCu25-20-5	1.4539
EN 10253-4	X6CrNiTi18-10	1.4541
EN 10253-4	X6CrNiMoTi17-12-2	1.4571
EN 10253-4	X6CrNiNb18-10	1.4550
EN 10253-4	X5CrNi18-10	1.4301
EN 10253-4	X2CrNi18-9	1.4307
EN 10253-4	X5CrNiMo17-12-2	1.4401
EN 10253-4	X2CrNiMo17-12-2	1.4404
EN 10253-4	X2CrNiMoN22-5-3	1.4462
EN 10253-4	X1NiCrMoCu25-20-5	1.4539
EN 10253-4	X6CrNiTi18-10	1.4541
EN 10253-4	X6CrNiMoTi17-12-2	1.4571
A403 / ANSI B16.9	WP 304 / WP 304 L	
A403 / ANSI B16.9	WP 304 / WP 304 H	
A403 / ANSI B16.9	WP 316 / WP 316 L	
A403 / ANSI B16.9	WP 321 / WP 321 H	
A815 / ANSI B16.9	UNS S31803 / S32205	
A403 / ANSI B16.9	WP 347 / WP 347 H	
A403 / ANSI B16.9	WP 904L / UNS N08904	
A815 / ANSI B16.9	UNS S32750	
A815 / ANSI B16.9	UNS S32760	

FLANGE		
Standard	Abbr. / Material	Material No.
EN 1092-1	X5CrNi18-10	1.4301
EN 1092-1	X2CrNi19-10	1.4306
EN 1092-1	X5CrNiMo17-12-2	1.4401
EN 1092-1	X2CrNiMo17-12-2	1.4404
EN 1092-1	X2CrNiMoN22-5-3	1.4462
EN 1092-1	X1NiCrMoCu25-20-5	1.4539
EN 1092-1	X6CrNiTi18-10	1.4541
EN 1092-1	X6CrNiMoTi17-12-2	1.4571
EN 1092-1	X6CrNiNb18-10	1.4550
EN 1092-1	X5CrNi18-10	1.4301
EN 1092-1	X2CrNi18-9	1.4307
EN 1092-1	X5CrNiMo17-12-2	1.4401
EN 1092-1	X2CrNiMo17-12-2	1.4404
EN 1092-1	X2CrNiMoN22-5-3	1.4462
EN 1092-1	X1NiCrMoCu25-20-5	1.4539
EN 1092-1	X6CrNiTi18-10	1.4541
EN 1092-1	X6CrNiMoTi17-12-2	1.4571
A182 / ANSI B16.5	F 304 / F 304 L	
A182 / ANSI B16.5	F 304 / F 304 H	
A182 / ANSI B16.5	F 316 / F 316 L	
A182 / ANSI B16.5	F 321 / F 321 H	
A182 / ANSI B16.5	F 316Ti	
A182 / ANSI B16.5	F 51	
A182 / ANSI B16.5	F 347 / F 347 H	
A182 / ANSI B16.5	F 904L	
A182 / ANSI B16.5	F 53	
A815 / ANSI B16.5	F 55	



BUHLMANN
TUBE SOLUTIONS



Kasachstan Almaty
Tel.: +7 707 759 6290
info@ramwell-kz.com

Germany Porta Westfalica
Tel.: +4917632428547
info@ramwell-kz.com